

SINCE 1908

FULL CHAIN
CONTROL

ONE
COUNTERPART

6 BUSINESS
UNITS

EU/
NORTH AFRICA

PARTNER OF
GRENDI GROUP

commerciale@darioperioli.it
www.darioperioligroup.com
La Spezia Viale Italia, 33 - 19124
Genova Via di Francia, 28 - 16149



Scan for company profile



DARIO
PERIOLI
GROUP

*Our union is
our strength.*

**The Mediterranean,
your bridge between
the EU and North
Africa.**

Founded in La Spezia in 1908 as a coal transportation company, Dario Perioli Group is today an integrated maritime and logistics operator with over a century of direct presence in Euro-Mediterranean trade lanes.

We control the full logistics chain - port terminal, maritime agency, regular shipping lines, international freight forwarding, maritime brokerage and customs consulting - under a single chain of responsibility.

For importers, exporters and supply chain operators working across complex Mediterranean markets, this means one counterpart from port of origin to final destination: faster decisions, fewer handovers, and operational accountability at every step.

Since August 2025, Dario Perioli Group is a partner of Grendi Group, www.grendi.it

NORTH AFRICA GATEWAY

**Regular liner service to
Algeria and Tunisia**

Agency network across Italy, Spain, France, Algeria and Tunisia.

MARITIME AGENCY

**Port agency for 200+ vessel
calls per year**

General cargo, project cargo, dangerous goods, LPG/LNG, ro-pax.

SEA BULK & PROJECT

**Chartering and post-fixture
brokerage**

For dry bulk, break bulk, OOG, project and heavy lift shipments.

TERMINAL & PORT OPERATIONS

**MDC Terminal, Marina di
Carrara**

Multipurpose infrastructure, heavy lift up to 100 tonnes.

FREIGHT FORWARDING

**Multimodal door-to-door
solutions**

FCL/LCL, dangerous goods, temperature-controlled, air freight

CUSTOMS BROKERAGE & CONSULTING

**Strategic customs
management**

Integrated with port and logistics operations.



SAHEL LINE
SHIPPING COMPANY

Your reliable bridge between Tunisia and Northern Italy.

Door to door solutions to Sfax, Sousse and Rades for RoRo, containers and break bulk.



DARIO
PERIOLI
GROUP

Two routes. One reliable operator.

One B/L issued by Dario Peroli Group
for the entire Tunisian coast

TYRRHENIAN DIRECT

Italy - Central Tunisia

- Marina di Carrara (MDC Terminal)
- Sousse
- Sfax

Frequency: every 10/15 days

Transit time: Sousse 2 days / Sfax 3 days

Cargo: container, break bulk, project cargo, dry bulk

Vessel type: Multipurpose - DWT (t) 4,743

Vessel deployment: Dario Peroli Group (*)

SARDINIA HUB

Italy - Rades (Tunis)

- Marina di Carrara (Grendi Terminal)
- Cagliari
- Rades

Frequency from MDC: daily connections to Cagliari

Frequency from Cagliari: weekly departure to Rades

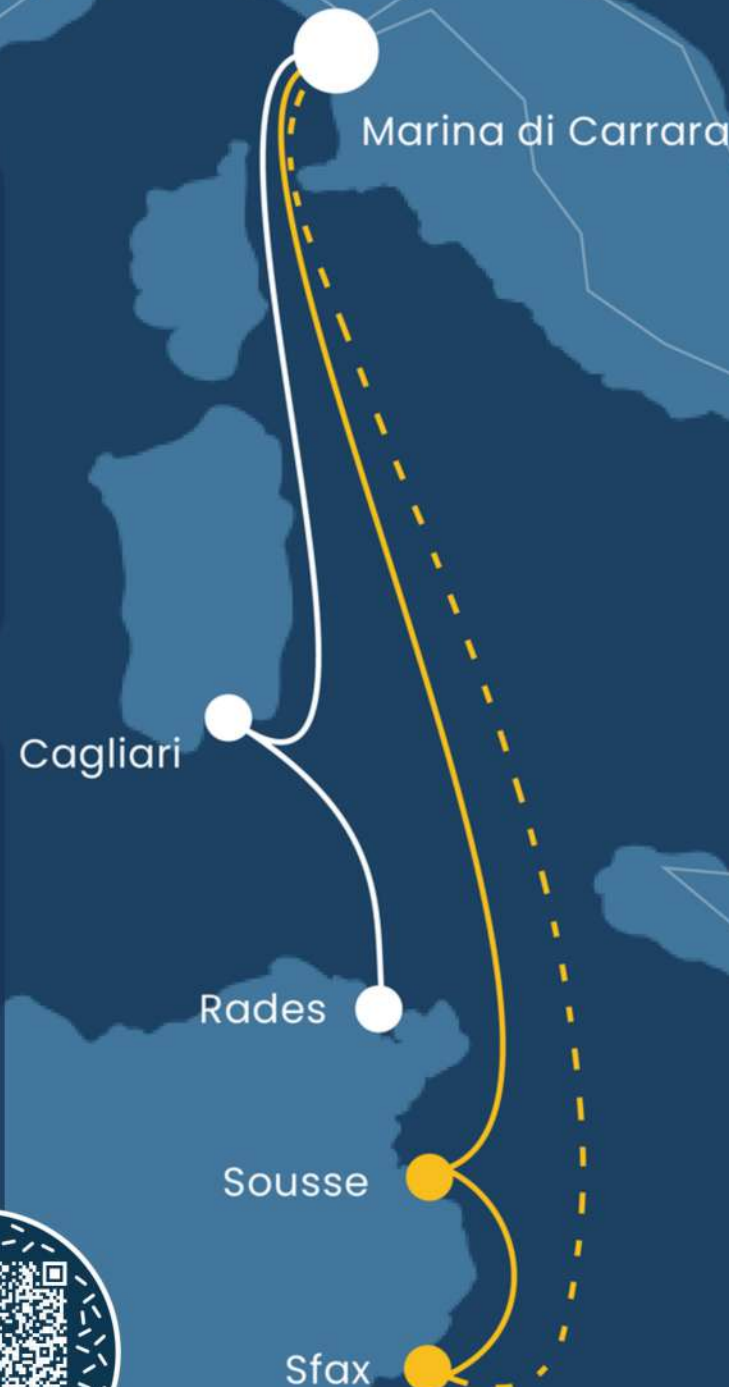
Transit time from Cagliari: 10 hrs

Cargo: Container, RoRo, Break Bulk and project Cargo

Vessel type: RoRo (cassettes system) - DWT (t) : 12,235

Vessel Deployment: Grendi Group

*Scan the QR Code to learn more



**CONTAINER · BREAK BULK · PROJECT
CARGO · DRY BULK · RoRo**

All cargo types. Same rotation.

COVERAGE

CENTRAL & SOUTHERN TUNISIA: Sousse, Sfax

NORTHERN TUNISIA: Rades/Tunis

Full corridor coverage from a single loading point.
Spot call for return cargo to Europe also available in
North Africa/Tyrrhenian range

ACCOUNTABILITY

ONE B/L. ONE CONTACT.

Whether your cargo goes north or central/south – same
operator handles the contract.

TERMINAL

Marina di Carrara Terminal – owned and operated by
Dario Peroli Group – represents the ideal gateway to link
main TenT European freight corridors.

No third-party terminal dependency.

YOUR CARGO. OUR ROUTE

Southbound

- Machinery & industrial components
- Steel & metal products
- Stone & marble
- Construction materials
- Mineral commodities
- Containerised export goods
- Break bulk & project cargo
- Dry bulk & raw materials

Northbound

- Salt Sand & gravel
- Crushed stone & marble
- Olive pomace
- FCL import containers
- Machinery & industrial components

IN-COUNTRY PRESENCE

Sahel Tunisie offices at both destination ports, in
partnership with ALL Seas Agency (Pangea Group).

When your cargo arrives, someone is already there.

CONTACTS

SAHEL LINE ITALY
Via di Francia, 28, Torre A, 16149 Genoa, Italy, +39 010 8600492
Commercial enquiries - commercial@sahel-line.com
Booking and operations - operations@sahel-line.com

SAHEL LINE TUNISIE SARL - Sousse
Rue Taieb Ghachem Immeuble Douik, 4000 Sousse, Tunisia, +21 673 202430-202431
SAHEL LINE TUNISIE SARL - Sfax
Residence El Corniche Rue Mohamed Hedi Khefacha, App N°A52 5EME Etage, 3000 Sfax - Tunisia, +21 674 212655